

DRAWING NUMBER  
**57/95**

DRAWING NUMBER

DRAWING NUMBER

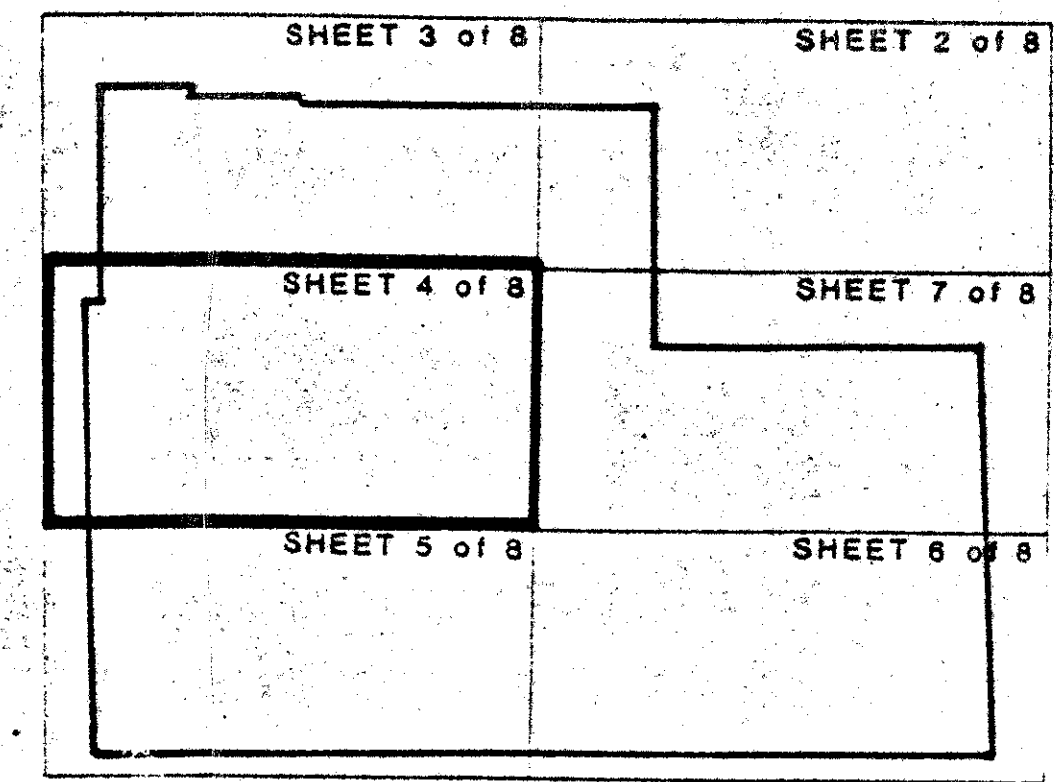
DRAWING NUMBER

# THE LEXINGTON CLUB

ALL OF HAMILTON PLACE - P.U.D.  
A RESUBDIVISION OF PINECREST PARK, P.B.4 PAGE II AND A  
PORTION OF PALM BEACH FARMS COMPANY PLAT NO. 1 P.B. 2  
PAGES 26 THROUGH 28, PALM BEACH COUNTY RECORDS,  
LYING IN SECTION 21 TOWNSHIP 46 SOUTH, RANGE 42 EAST

PALM BEACH COUNTY, FLORIDA  
IN 8 SHEETS SHEET NO. 4  
**Post, Buckley, Schuh & Jernigan, Inc.**  
CONSULTING ENGINEERS PLANNERS and SURVEYORS

**PBS**  
JANUARY 1987



STATE OF FLORIDA  
COUNTY OF PALM BEACH

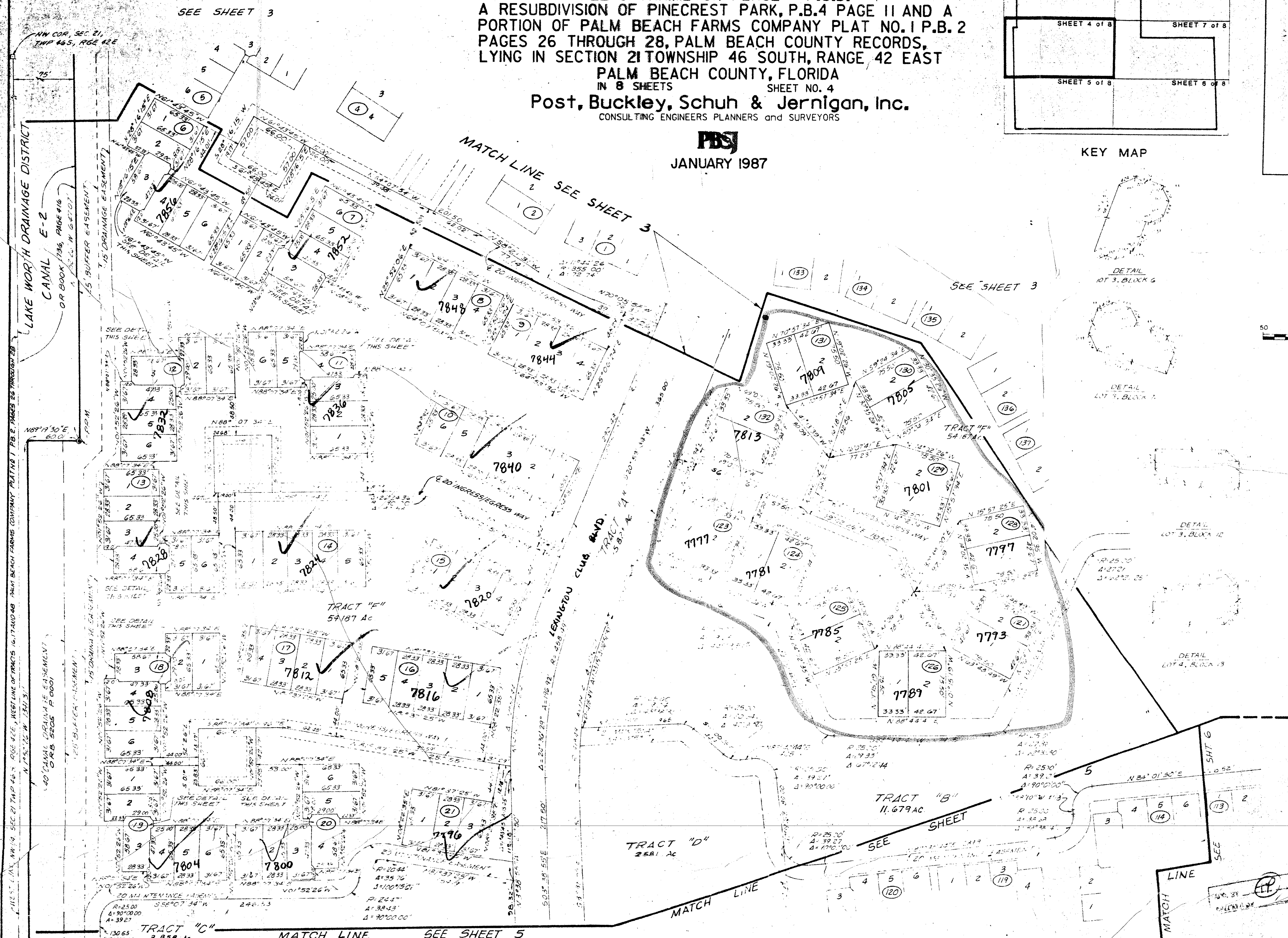
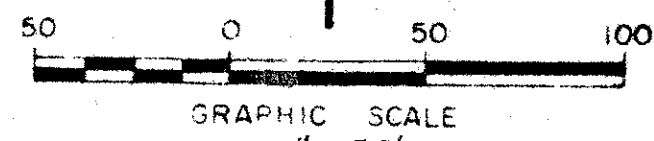
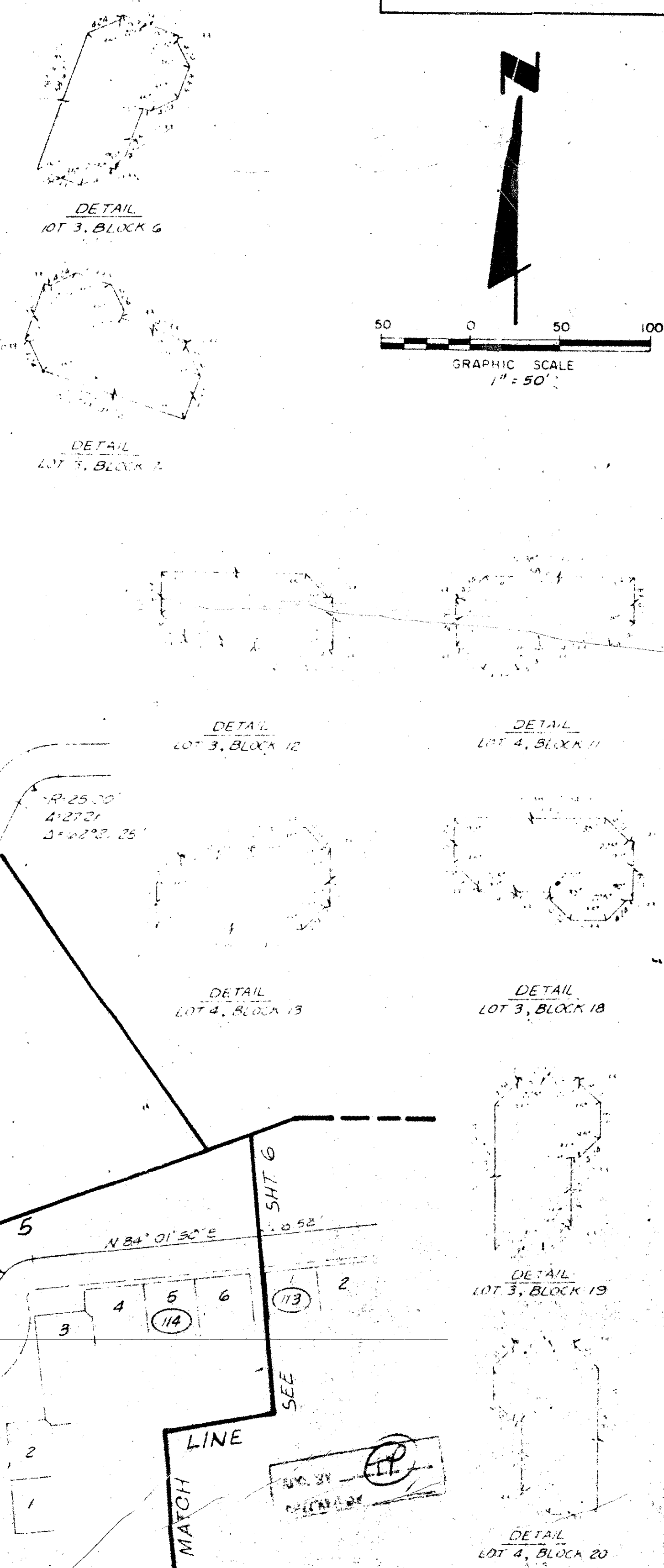
**95**

THIS PLAT WAS FILED  
FOR RECORD AT \_\_\_\_\_ M.  
THIS \_\_\_\_\_ DAY OF \_\_\_\_\_ 1987.  
AND DULY RECORDED IN  
PLAT BOOK NO. \_\_\_\_\_ ON  
PAGE \_\_\_\_\_

JOHN B. DUNKLE  
CLERK CIRCUIT COURT

BY: \_\_\_\_\_ D.C.

KEY MAP



SUBDIVISION \*  
BOOK \*  
FLOOD ZONE \*  
ZONING \*  
ZIP CODE \*  
PUD NAME \*  
THIS MAP

PLAN HOLD CORPORATION \* IRVINE, CALIFORNIA  
REGISTERED PROFESSIONAL SURVEYORS  
REGISTERED PROFESSIONAL ENGINEERS

SEE SHEET 3  
NW COR, SEC 21,  
TWP 46 S, RGE 42 E

LAKE WORTH DRAINAGE DISTRICT  
CANAL E-2  
OR BOOK 1736, PAGE 416  
A 5' BUFFER EASEMENT  
7.5' DRAINAGE EASEMENT

TRACT "C"  
2.858 AC  
MATCH LINE SEE SHEET 5

TRACT "D"  
2.681 AC  
MATCH LINE SEE SHEET 5

TRACT "B"  
11.679 AC  
SHEET

TRACT "F"  
59.187 AC

SEE SHEET 3

MATCH LINE SEE SHEET 3